

CMBecker[®]

INTERNATIONAL, LLC

Beverage Dispensing Solutions

CMBecker®

INTERNATIONAL, LLC

Beverage Dispensing Solutions

Thank you for opening our latest catalog. We know how busy you are, and we truly appreciate you choosing to spend a few minutes with us. On behalf of the whole team at CMBecker International, thank you for your continued business. As a small, family-oriented company, we know we only succeed when you do.

At CMBecker, we don't just sell dispensing equipment; we're a small, dedicated team that lives and breathes this industry. We pride ourselves on "fanatical" customer service! When you call us, you aren't reaching a call center—you're reaching the people who build, test, and use this gear in the field every day. We work for you, and we take that responsibility personally.

We've expanded our product offerings in this catalog edition that we're really proud of. In particular, if you're an installer or draft beer technician, we'd love the chance to get our CMB faucets into your hands so you can experience the quality firsthand.

The prices in this catalog reflect the 15% tariff in place when the catalog was published. If additional tariffs are added then the amount of the tariff would be added to these published prices.

We don't just want to be your supplier; we want to be your partner. Our personal lines are always open.

Thank you for supporting our business. We look forward to serving you!

The Team @ CMBecker International LLC

Here is our contact information:

Todd Burns, President

Cell: 512-749-7713

*Call me anytime; nights, days,
weekends and even holidays*

tburns@cmbecker.com.

James Carlson, Director of Operations

Office: 325-356-1037

Cell: 254-842-9561

jcarlson@cmbecker.com

Lana Woolever, Production Manager

Office 325-356-1037

lana@cmbecker.com



WHAT'S NEW AT CMB

NEW PRODUCT



CUSTOM TOWERS

More info on page 15

FEATURED PRODUCT

CS10



FLOW CONTROL

FORWARD SEALING

CREAMER ACTION

More info on page 6

FEATURED PRODUCT

GOVREG



CMBecker is proud to introduce the GovReg inline secondary regulator. Big features in a small form factor!

More info on page 12

FEATURED PRODUCT

CS20

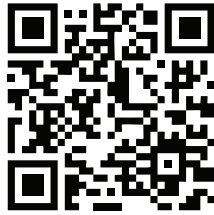


CREAMER ACTION

FORWARD SEALING

More info on page 8

CMB X1



SCAN HERE & WATCH
THIS SHOWCASE
VIDEO FROM ONE OF
OUR PARTNERS!



FLOW
CONTROL

FORWARD
SEALING

*Shank & fitting sold separately by length
needed. See accessories page later in this
catalog for details or call us for assistance!



as low as
\$39.99

**NOW AVAILABLE IN
STAINLESS STEEL!**

Full length True Flow Control

(completely control restriction at the faucet; no restriction line needed)

Made w/ NSF Food Grade Plastic &
Premium 304 Stainless Steel

Various beer length shanks available

Made in Germany, assembled in the USA!

Features a built in "creamer" function
(put a fine cream head on your beer)

Used globally in restaurants and bars



FEATURED PRODUCT



SCAN HERE &
WATCH THIS
SHOWCASE
VIDEO FROM
ONE OF OUR
PARTNERS!



as low as
\$93.99



**FLOW
CONTROL**

**FORWARD
SEALING**

CS10

Full length True Flow Control

(completely control restriction at the faucet; no restriction line needed)

Elegant European design

Made w/ Premium 304 Stainless Steel

Various beer length shanks available

Made in Germany, assembled in the USA!

Features a built in "creamer" function
(put a fine cream head on your beer)

Used globally in restaurants and bars

*Shank & fitting sold separately by length
needed. See accessories page later in this
catalog for details or call us for assistance!



SCAN HERE &
WATCH THIS
SHOWCASE
VIDEO FROM
ONE OF OUR
RETAILERS!



as low as
\$89.99



**FLOW
CONTROL**

**FORWARD
SEALING**

CMB V10

Full length True Flow Control

(completely control restriction at the faucet; no restriction line needed)

Elegant European design

Made w/ Premium 304 Stainless Steel

Various beer length shanks available

Made in Germany, assembled in the USA!

Features a built in "creamer" function
(put a fine cream head on your beer)

Used globally in restaurants and bars

V3S FAUCET

It is time to move forward with the German made, technologically advanced, forward seal, creamer faucet from CMB, the V3S. This faucet is very compact, beautifully finished and full of technological advantages to help you pour the perfect beer. The sleek European design complements the look of your beer system.

- Forward Seal for better sanitation and less sticking
- Features a built in "Creamer" function so you can put a fine cream head on your beer, including wet foam!
- 304 Stainless Steel construction will not affect the flavor of beer, wine, coffee, etc
- Vents at the top for better sanitation
- Unique Closed Piston chamber with encapsulated compression spring
- No beer is trapped in system or exposed to air, which provides more sanitary conditions.

as low as
\$52.78



as low as
\$62.64

THIS FAUCET IS ALSO OFFERED
WITH A LONG BENT NOZZLE



**FORWARD
SEALING**

**CREAMER
ACTION**



**SCAN THE QR CODE
TO SEE A VIDEO
ABOUT THE V3S**



CMB X2 FAUCET

The X2 faucet is made in Germany and assembled in the USA! It is made from a very durable polymer material that is also NSF food grade certified. This faucet has more options and configurations than any other faucet we make. This makes it desirable to many different types of customers including installers, system manufacturers and OEM applications. Here are some of the features/options available on this faucet:



as low as
\$28.35



- Creamer or non creamer options
- Self closing options
- Nozzle style options
- Shaft and seat options (determines creamer or non creamer)

Please refer to page 8 for a visual explanation of all of the options



THIS FAUCET IS AVAILABLE IN MULTIPLE VARIATIONS & CUSTOM COLORS

*custom colors available but must be purchased in 300 quantity minimum runs. call us for details!

FEATURED PRODUCT



as low as
\$76.42

CS20 FAUCET

- Forward seal for better sanitation and operation.
- Features a built in "creamer" function so you can put a fine cream head on your beer, including wet foam!
- Vents at the top for better sanitation
- A new barrel shaped European design
- NEW hybrid shaft & seat has the advantages of both the original and encapsulated piston styles
- Easier to clean!
- 304 Stainless steel construction for longer life

CREAMER ACTION

FORWARD SEALING

SCAN THE QR CODE TO SEE OUR CUSTOMER SHOWCASE SECTION OF VIDEOS + PHOTOS



as low as
\$73.59

V20 FAUCET

- Forward seal for better sanitation and operation.
- Features a built in "creamer" function so you can put a fine cream head on your beer, including wet foam!
- Vents at the top for better sanitation
- A very heavy duty stainless steel faucet with long solid stainless steel nozzle.
- Closed piston chamber with encapsulated compression spring.
- Creates a germ free environment for better sanitation
- 304 Stainless steel construction for longer life

CMBECKER FAUCET OPTIONS & FEATURES

We have created this page to explain all of the difference options & features available on our faucets. These options & features are an important part of what we have to offer because we can create custom solutions for installers or OEM applications that other faucet companies simply cannot. However, having so many options & features can be confusing - so, we hope the following explanations are helpful. As always, if you have any questions please contact us and we'll get you taken care of!

SELF CLOSING OPTIONS



X1 & X2 faucets
are both available
as self closing.
Ask for details!

CREAMER OPTIONS

Experience the luxurious texture of CMBecker's legendary creamer function. Our innovative design features a precision-engineered passage that produces exceptionally fine and creamy foam, enhancing every pour with velvety richness.



SCAN THE QR CODE TO
SEE OUR CUSTOMER
SHOWCASE SECTION OF
VIDEOS + PHOTOS



SHAFT & SEAT OPTIONS



Standard shaft & seat



Standard shaft & seat + creamer



Closed piston chamber w/
encapsulated compression
spring



Hybrid shaft & seat

PVD COATINGS

We can coat any of our stainless steel faucets, allowing a variety of colors upon request!



FAUCET NOZZLES



Short nozzle
(black or chrome)



Long nozzle
(chrome)



Bent nozzle
(short or long)

**CONTACT US
TODAY!**

325-356-1037
tburns@cmbecker.com

CUSTOM LOGOS

Thanks to our new laser, we can now personalize our faucets for you!



FLOW CONTROL EVENT FAUCET



SCAN HERE & WATCH THIS SHOWCASE VIDEO



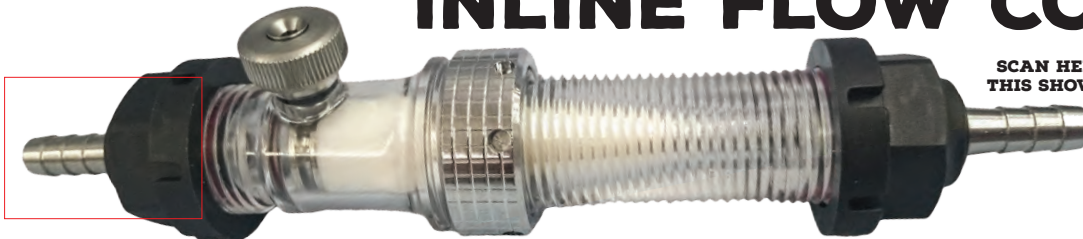
- Flow control allows you to dispense beer fast and foam free. This faucet does not need any restriction (choker hose). The flow control valve will allow you to restrict the beer flow and control foam, so beer length and inside diameter is not important (you can even use the braided soda style hose or trunk line style hose if you prefer)!

Made in Germany



- Extremely high quality German Made Product. Made for commercial use in large volume event settings.
- Easy to use and simple to take apart and clean.
- Parts made from NSF approved Plastics and Stainless Steel. Sanitary/food service grade product.

INLINE FLOW CONTROL



SCAN HERE & WATCH THIS SHOWCASE VIDEO



Choose your size tailpiece! See page 10.

This product allows you to restrict beer or other beverages in line, so you don't have to have a separate flow control faucet!



- Uses an Allen wrench (provided) to adjust flow (keeps unauthorized people from changing flow); also available with lever.
- Eliminate foam from beer or slow down/speed up other beverages.
- Fix systems with restriction issues without having to replace lines or faucets.
- Take the guess work out of line restriction. You can use shorter lines and still have perfect restriction. You can also use line with larger I.D.
- Easy to disassemble for cleaning; clear for easy monitoring.
- The flow control valve will allow you to restrict the beer flow and control foam, so beer length and inside diameter is not important (you can even use the braided soda style hose or trunk line style hose if you prefer)!

Made in Germany



FLOW CONTROL SHANKS & ACCESSORIES

2 1/2" Chrome Exterior,
Food Grade Liner Inside



2 1/2" 304 Stainless



5 3/8" 304 Stainless



8 3/8" 304 Stainless



Compensating Shank

The perfect solution for retrofitting taps that are not already equipped with a compensator!



Black Shank Flange



Back Spacer for Shanks



Coupling Nut - Chrome



Spanner Nut for Shank

STANDARD SHANKS

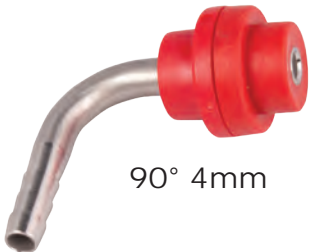


Chrome Exterior,
Food Grade Liner Inside



Available in 304
Stainless or
Standard Chrome

2K DOUBLE SEALING NIPPLE & NUT COMBOS



90° 4mm



Straight 4mm



90° 6mm



Straight 6mm



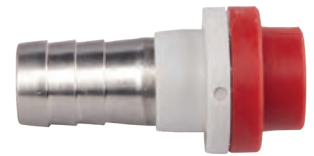
90° 7mm



Straight 7mm



90° 10mm



Straight 10mm

Conversion Table:

CMB Nipple (barbed) sizes

Metric to Approximate SAE sizes and Hose I.D.'s they will fit

MM Size (I.D.)	Inch Decimal (I.D.)	Inch Fraction (I.D.)	MM Size (O.D.)	Inch Decimal (O.D.)	Inch Fraction (O.D.)	I.D. Hose to Fit:	Notes:
4mm	0.156	5/16	5.5mm	0.222	7/32	3/16	Slightly larger
6mm	0.265	17/64	7.22mm	0.28	9/32	1/4 (or) 3/16	Larger than 1/4
7mm	0.276	9/32	8.5mm	0.335	11/32	5/16 or 3/8	Exactly between
10mm	0.385	3/8	11.5	0.45	29/64	1/2"	Slightly Smaller

*** Additional Notes: Most people use larger size barbs on softer vinyl hose. For example if you are using a 3/16 ID hose most installers would use the 6mm, not the 4mm. The 7mm works best for 5/16.

CMB Shank
Nut



Side View



Rear View

ROTARY FAUCET

**Made in Germany**

The Rotary valve faucet was designed and produced by our factory in Germany with input from the head of our Portuguese factory. This faucet is very popular in Portugal and other parts of Europe. It features a stainless-steel body and spout which make it perfect for pouring not just beer, but wine and other acidic liquids. Make your draft beer installation stick out with this unique design and European look and feel.

- Rotary ball design allows smooth opening and closing.
- Vented on shutoff to clear spout and prevent dripping.
- Stainless steel body and spout for dispensing a variety of liquids, including wine and beer.

as low as
\$79.99



as low as
\$89.99

**SCAN THE QR CODE TO
SEE OUR CUSTOMER
SHOWCASE SECTION OF
VIDEOS + PHOTOS**



CM10 FAUCET

The CM10 is a retro flow control faucet. It is constructed of 304 stainless steel. This faucet style was one of the most popular flow control faucets in the world! Sold in Europe, Central America, and South America, as well as many other regions. Because of its design and rear seal (with shaft & seat visible from the front), it is sought after by bars trying to add taps or replacing taps in a line of taps that already use similar faucets. It is also desired by bars and restaurants looking for that classic retro look!

GovReg[®]

The Future of Secondary Regulators

Accurate

No pressure creep!

Easy to Install

No drilling holes
in keg boxes!

Reliable

Set it and forget it!

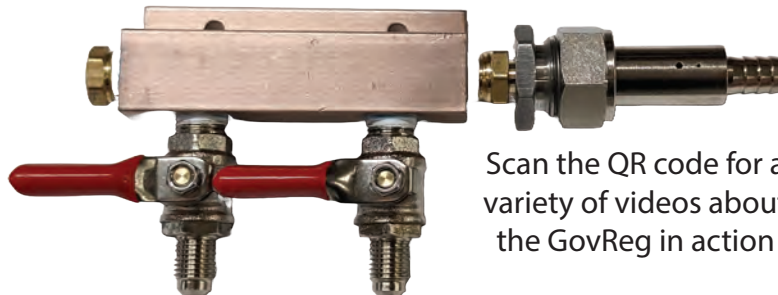


The GovReg[®] is a revolutionary secondary regulator that is the perfect solution for draft beer installers.

- Can be directly attached to a coupler to provide different pressure
- Can be attached to air distributors to provide "groups" of a certain pressure
- Put multiple types of beverages on the same system, beer, mixed drinks, wine, etc.
- You still need a primary regulator, but substantially lowers cost of secondary regulators
- Needs adjuster to change pressure, eliminate unauthorized pressure changes by bartenders and other bar/restaurant staff.

as low as

\$14.29



Scan the QR code for a variety of videos about the GovReg in action



Accessories, adapters, & starter kits are available too!
Call us for assistance!



GovReg Adjuster Pricing

Old Adjuster ~~\$34.95~~

New Adjuster - \$19.89

CMB PRIMARY REGULATORS

CMBecker Regulators were developed by USA, German and Portuguese partners. Many of the internal parts are precision made in Germany. These are used in commercial applications in Europe and the United States. These beer regulators are assembled and tested in the United States. They can be done in many configurations and will provide years of solid service. Unlike many of the imported regulators sold in the USA, these are serviceable and designed to last a lifetime.

- Assembled in the USA, precision internal parts made in Germany
- Designed for the commercial and homebrew draft beer market in the USA (Iso used in European commercial market + others)
- Locking pressure knob allows you to keep regulator pressure where you want it
- Internal filter keeps contaminants out
- Comes standard with MFL check valve. You can attach 5/16", 1/4" or other barbs to fit your hose size
- Serviceable, this regulator is designed for long term use!
- Knowledgeable sales and support, we know this regulator and have staff available to assist you

Made in Germany



CUSTOM CONFIGURATIONS AVAILABLE!
as low as **\$55**



CMB REG w/ WYE



CMB DUAL BODY REGULATOR



CMB NITROGEN REGULATOR



CMB DUAL BODY NITROGEN REGULATOR

CMB SECONDARY REGULATORS



as low as
\$52



Secondaries are configurable to whatever specifications YOU need! We readily build these up to 10 bodies, and passthroughs are a good option beyond that.



PASSTHROUGH SECONDARIES ARE AVAILABLE TOO

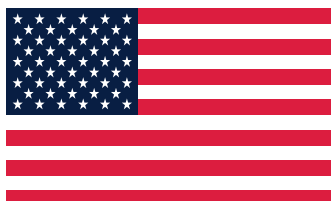


We can configure as many bodies as you need for your passthrough system!

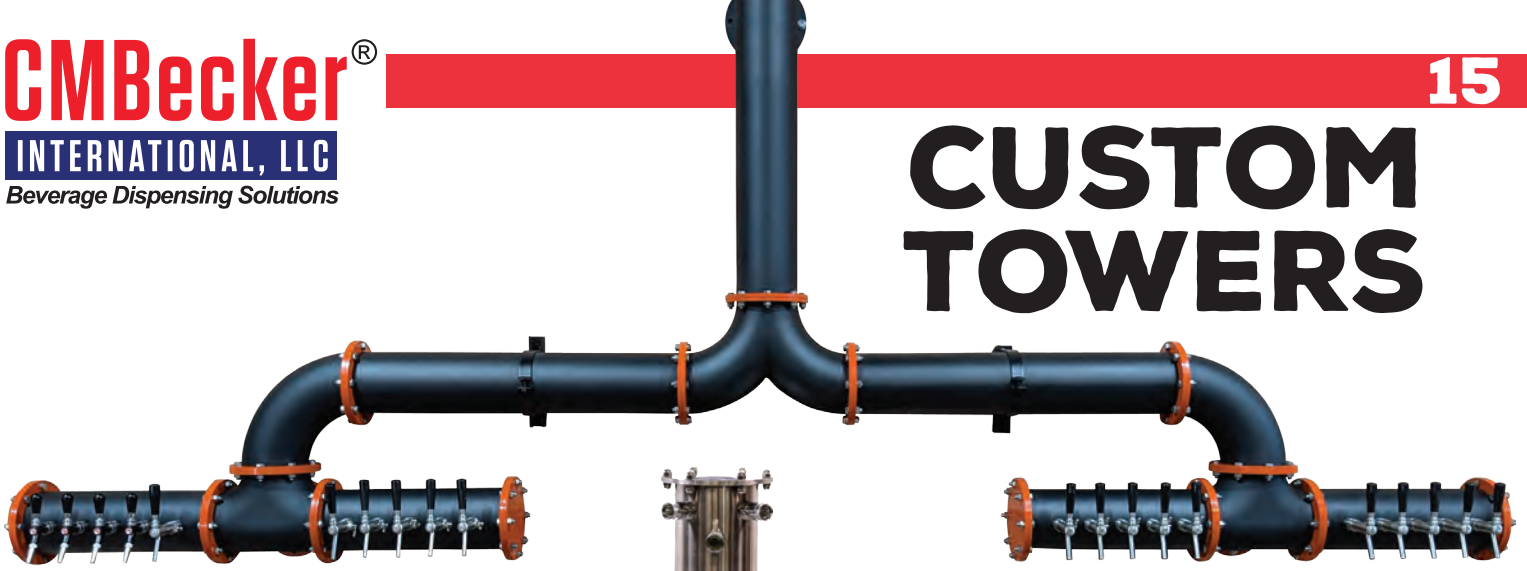
Made in Germany



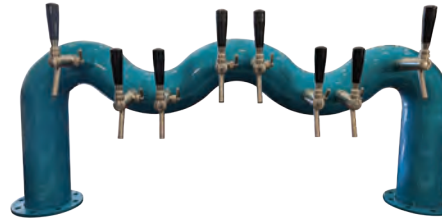
Assembled in USA



CUSTOM TOWERS



The beer tower is the heart of your bar, brewery, or restaurant. With a custom tower + CMB faucets, your draft system will deliver superior performance in style!



SCAN THE QR CODE TO SEE OUR CUSTOMER SHOWCASE SECTION OF VIDEOS + PHOTOS



IF YOU CAN DREAM IT, WE CAN BUILD IT



NORDIC BEER
SYSTEMS INC

All Nordic Beer Towers
can now be ordered
with *all* CMB faucets!



innovative Technik!

**CMB Towers
available too**

Made in Germany



CMB DISCONNECTS

& Replacement Parts



CMB disconnects for soda / homebrew kegs have been considered the industry standard for over forty five years! Our exceptional build quality and devotion to customer satisfaction is why we're trusted by thousands of companies worldwide. Utilizing the highest grade of food-grade plastics and internal components; our disconnects won't fail you. Offered in threaded, barbed, and even versions with check valves; [scan the QR code below to see our entire lineup!](#)



BIB CONNECTORS



CC BIB Disconnect, 3/8" Barb
(Available in a variety of colors)



CC BIB Disconnect, 3/8" Metal Barb
Available in Red, SKU 40 20-1104-20



CC BIB Disconnect, 3/8" 90° Barb
Available in Red, SKU 40 20-1102-20



- #1 O-Ring or Flat Washer
- #2 Spring
- #3 Stem with O-Ring
- #4 Cap for Ball Lock, Liquid Side
- #5 Cap for Ball Lock, Gas Side
- #6 Cap for Pin Lock, Liquid Side
- #7 Cap for Pin Lock, Gas Side
- #8 Disconnect Parts kit for Ball Lock, Liquid Side
- #9 Disconnect Parts Kit for Ball Lock, Gas Side
- #10 Disconnect Parts Kit for Pin Lock, Liquid Side
- #11 Disconnect parts Kit for Pin Lock, Gas Side



SODA & PREMIX

as low as
\$34.95



Premix Valve with Yokes

SKU 50 21-2200-90 : 1/2" MFL
SKU 50 27-2200-90 : 7/16" MFL
SKU 50 20-2200-90 : 3/16" BARB

as low as
\$29.95



Premix Valve with FFL

SKU 50 21-2215-90
BARB offered in 1/4" or 3/8"

CO2 Wrench



as low as
\$1.99

1 1/8" USA | SKU 06 10-3211-90
30mm Euro | SKU 06 10-3210-90

Flare Washers



1/2" Red | SKU 06 11-20-20
7/16" White | SKU 06 17-1020-10
3/8" Black | SKU 06 10-1019-90

CO2 Mixing Valve



as low as
\$29.95

SKU 40 10-1095-00

Cleaning Adapters



BIB Cleaning Adapter, Blue
SKU 06 20-1710-30



BIB Cleaning Adapter, Red
SKU 06 20-1110-20



Line Cleaning Adapter, 3/8"
SKU 06 10-2268-90-1



Line Cleaning Adapter, 5/16"
SKU 06 10-2268-90



Line Cleaning Adapter, Ball Lock
SKU 06 20-1721-00

BEER LINE CLEANING



What is Double-O?

Double-O is a peroxide based cleaner that uses lifting technology designed to penetrate, remove build up and clean deeper without destroying your lines. This isn't your outdated high-caustic formula, this is an eco-friendly cleaner that outperforms other cleaners on the market. Our purpose is to exceed industry standards at every step. No tricks, no gimmicks, just facts. See what the only naturally occurring cleaner can do for you. Packets to make 6 gallon batches available OR bulk bucket options are offered too!

Double-O

as low as
\$1.65

1. Penetrates buildup faster
2. Lifts soils chemically instead of burning them
3. Works on more materials without corrosion
4. No damage to Soft Metals, Aluminum, Brass, Copper, Plastics, Seals, Gaskets, Pumps or Stainless
5. Our RLU (Relative Light Unit) rating is below 100, while the industry standard is 200. Less bad bacteria to ensure a better quality brew
6. No rinse cycle needed for proper usage
7. A better way to exceed the standard when cleaning and soaking faucets & couplers. A more effective clean that is easier on the hands
8. Powder form to pass the savings on to you

Safety

1. No hydrogen-gas risk
2. No special Class 8 liquid transport requirements
3. No severe 1A rating
4. Dust hazard only, no inhalation of caustic mist
5. Safe storage (no metal-corrosion during storage)

Caustic Cleaners

1. Burns material instead of cleaning it
2. Leaves behind organic material which will continue to grow
3. Damage to Soft Metals, Aluminum, Brass, Copper, Plastics, Seals, Gaskets, Pumps and Stainless
4. Requires over 26x more product to match our cleaning power
5. Always liquid (shorter shelf life and higher cost for shipping)

Safety

1. More dangerous to handle
2. Potential Category 1A skin corrosion
3. Generates hydrogen gas when exposed to metals
4. Can cause long-term lung damage
5. Often requires heavy PPE and sometimes SCBA

AUTOMATIC LINE CLEANING MACHINE

Produces pressures up to 14 bar (200psi)
Flow rate up to 116 gallons per hour

Line cleaning made
easy and affordable.
Plus - our machine
works with FOBs!

as low as
\$1099

Scan the QR
code to see
our machine
in action. Easy
to use!



BEVICLEAN GLASS CLEANING SOLUTIONS

In-sink or countertop
varieties available. Easy
to install and use!



as low as
\$169



as low as
\$179



BEER LINE CLEANING KITS



as low as
\$18.89

SCAN THE QR CODE TO
SEE HOW EASY IT IS TO
USE OUR VERY POPULAR
BEER LINE CLEANING KIT



as low as
\$3.95
per pound



BREW CLEAN

A SUPERIOR EQUIPMENT CLEANER

OEM/CUSTOM PRODUCTS & SOLUTIONS

For decades, CMBecker has assisted installers and other companies worldwide in the draft beer industries come up with unique products for restaurant chains, bars and breweries. If you need a unique faucet or modifications to meet your clients' needs, we can help in many ways including:



Customized Faucets

Over the years we have made significant changes to our faucets to make them unique for your client. This would include:

Color changes – unique custom colors on our X1 polymer faucets. This would include a color to match the logo or theme of your client. This would require a quantity of no less than 300 faucets.

PVD coatings – On our stainless steel faucets we can do very durable PVD coatings to make your clients faucets unique. This can be done in smaller quantities, but larger volume would lower cost per faucet.

ADA compliant features can be added to our faucets.

Product specific faucets – Have a brewery or other business that to serve Kombucha, nitro drinks, coffee, sparkling water or mixed drinks? We have solutions that will work with every beverage.

Custom/OEM Towers

As we mention on page 15 we do custom towers. We also have experience producing large quantities of custom towers at an affordable price.

We have produced thousands of towers for multiple European breweries and other businesses in the draft beer industry.

Working on a system to dispense other beverages like sparkling/still water, coffee, etc? We work with multiple companies that use our faucets/towers and other products in their systems. We can help you with components or turn key systems.

CMBecker®

INTERNATIONAL, LLC

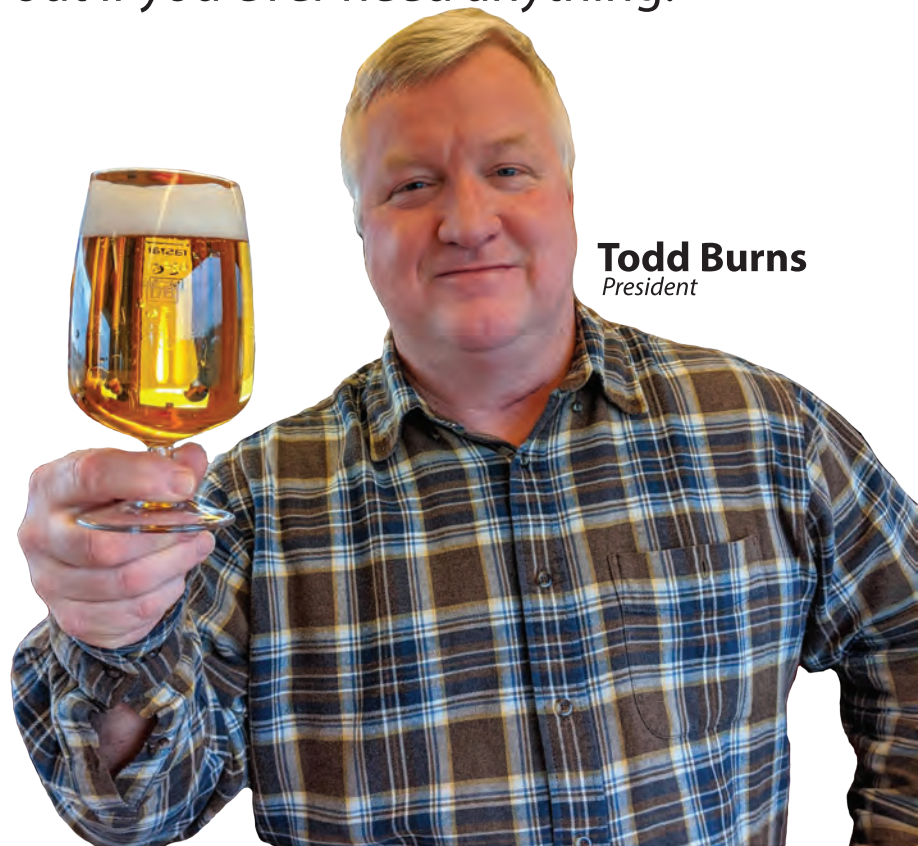
Beverage Dispensing Solutions

**You've seen our products
*how can we support you?***

We stand behind our entire line of products with fanatical customer service and we'll make sure you're satisfied with your purchase. Reach out if you ever need anything!



Scan the QR code to see how our customers are using our products!
Want your company featured?
Contact us today!



Todd Burns
President